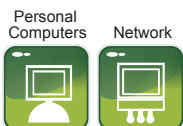


# LCD Inverter IG3110C

## Off-Line Long Back Up UPS

500-2000VA



### ► Product snapshot:

Model: 500-2000VA

Nominal voltage: 220/230/240VAC

Nominal frequency: 50/60Hz

Output Power factor: 0.6

### Key Features

- Multi-function LCD Display & LCE Indicate
- Automatic line-to-battery switchover
- Selectable Input voltage ranges
- High efficient DC-to-AC conversion, minimizing energy loss
- Rack Tower design for flexible placement
- Built-in enhanced charger
- Intelligent 2-stage charger control for efficient charging and preventing overcharge
- Provides overload protection
- Auto restart while AC recovery
- Multi-function LED indications and buzzer alarms

### Build-in with big charger

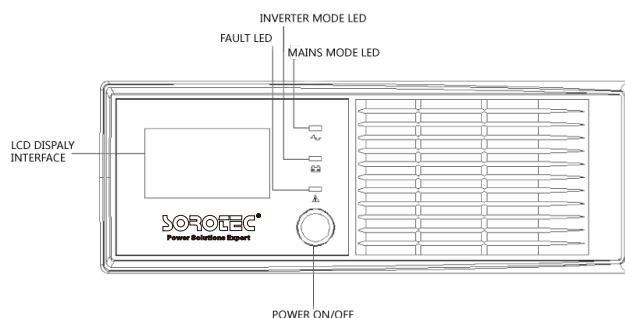
IG3110C series long back up UPS Built-in with 10Amp charger for up to 100Ah battery.

### Full protection

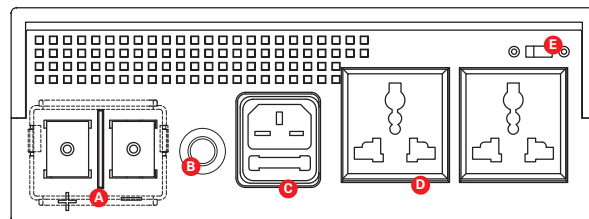
Protection for low battery voltage, over load, output short circuit and over- temperature. Restrain surge interference, eliminate noise, protection for Thunder striking, provide the reliable power to the Home appliances.



### LCD Inverter IG3110C Front Panel



### Back Panel Description:



- A** DC Input Connector
- B** Input Breaker
- C** AC Input Connector
- D** Output Receptacle
- E** Input Voltage Range Selector

## IG3110C series Technical Specifications

Model	IG3110C 500-2000VA			
	500-12	1000-12	2000-24	1000-24
Capacity	500VA/300W	1000VA/600W	2000VA/1200W	1000VA/600W
Nominal Voltage	220/230/240VAC			
Nominal Frequency	50/60Hz			
Input				
Voltage Range	176VAC-280VAC (±3VAC)			
Frequency Range	50/60Hz			
Output				
Voltage Regulation	220/230/240VAC±2%			
Frequency Regulation	50/60Hz+0.1Hz			
Wave Form	Modified sine wave			
Transfer Time	Standard 2～4ms    Typical 6ms			
Current				
Charge Current	10A ± 1AMP	10A ± 1AMP	10A ± 1AMP	6A ± 1AMP
DC Voltage	12V	12V	24V	24V
Overcharge Protection	15V	15V	30V	30V
LCD Display & LED Indicate				
AC Mode	Green lighting			
Battery Mode	Yellow lighting			
Battery Charging Mode	Green flashing every 2 second			
Overload	Red flashing every 0.5 second			
Fault	Red lighting			
Operating Environment				
Temperature	0℃～40℃			
Humidity	5%～95% (<40℃ , Non-condensing)			
Storage Temperature	-25℃～55℃			
Elevation	< 1500 m			
Noise (within 1 meter)	<45dB			
Physics Characteristic				
Weight (KG)	N.W	2.0	2.5	2.5
	G.W	2.2	2.7	2.7
Dimensions : ( Wx D x H )mm		224×225×80		

STANDARD: Conform to GB/IEC regulation: EMC:GB7260.2/IEC62040-2 GB/17626.2~5/IEC61000-4-2~5 SAFETY:GB4943

Note: Product specifications are subject to change without further notice.